

oakheart

£425,000

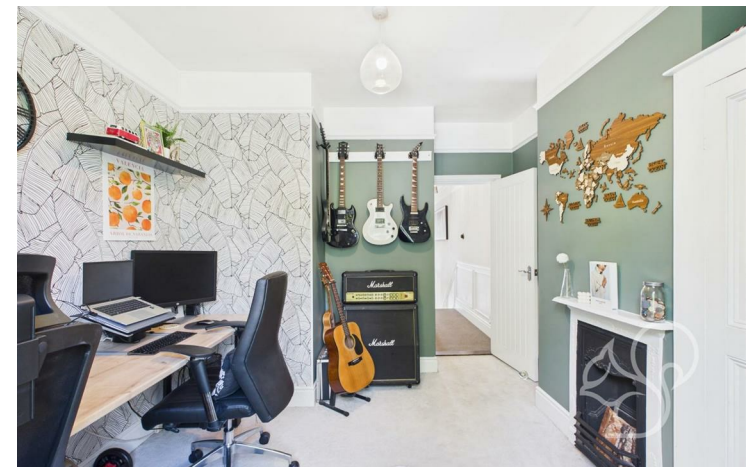
Guide Price

North Station Road, Colchester

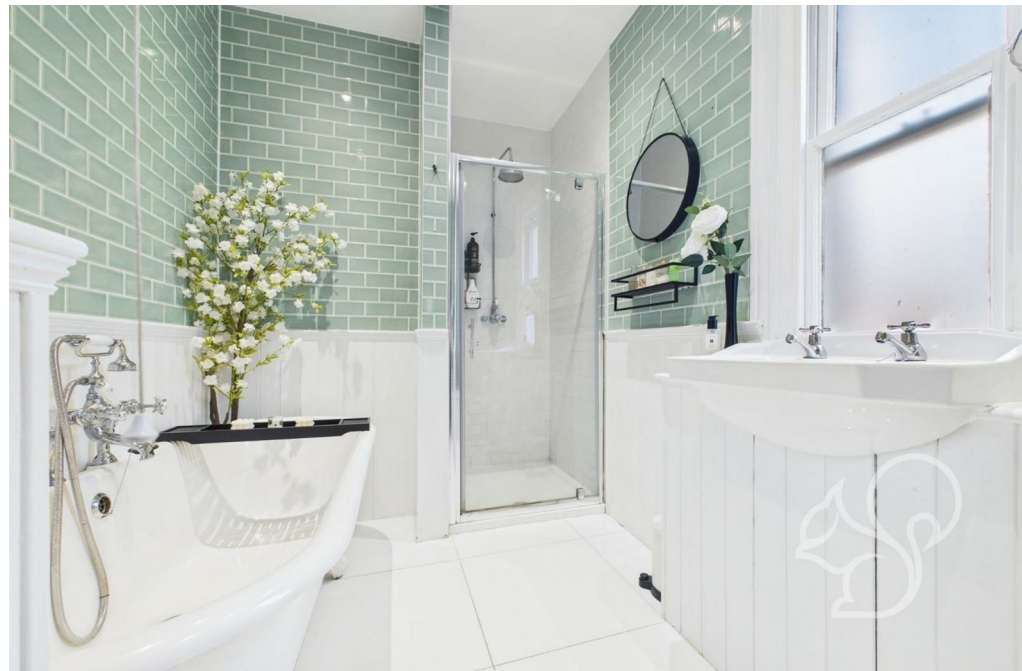
Guide Price: £425,000 - £450,000.

Positioned in a prime and highly convenient location, this exceptionally presented three-bedroom semi-detached Edwardian home offers a seamless fusion of period charm and contemporary living. Just a five-minute walk from Colchester Mainline Station—with fast connections to London Liverpool Street—and

within walking distance of the vibrant city centre, well-regarded schools, and a wide range of local amenities, this property combines location, lifestyle, and timeless design.












oakheart

Local Authority:
Colchester

Tenure:
Freehold

Council Tax Band:
C

Energy Efficiency Rating

	Current	Potential
Very energy efficient - lower running costs		
(92 plus) A		
(81-91) B		84
(69-80) C		
(55-68) D	63	
(39-54) E		
(21-38) F		
(1-20) G		
Not energy efficient - higher running costs		
England & Wales	EU Directive 2002/91/EC 	

Agents Note: Whilst every care has been taken to prepare these particulars, they are for guidance purposes only. All measurements are approximate and are for general guidance purposes only and whilst every care has been taken to ensure their accuracy, they should not be relied upon.

Oakheart Colchester
01206 803 308
colchester@oakheart.co.uk
2b Cotman Road, Colchester, Essex, CO3 4QJ

oakheart